



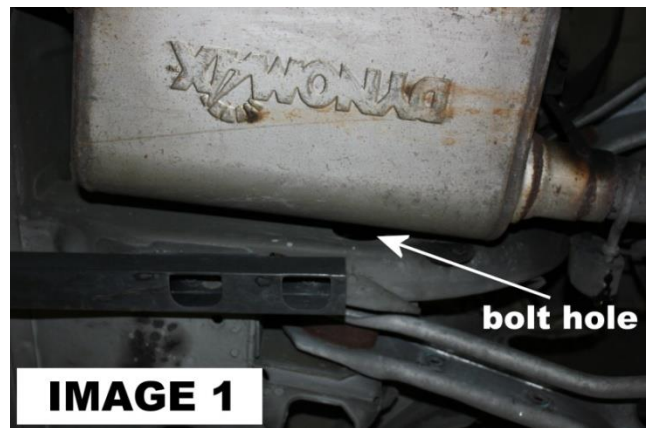
TCA049 INSTALLATION INSTRUCTIONS

REQUIRED TOOLS:

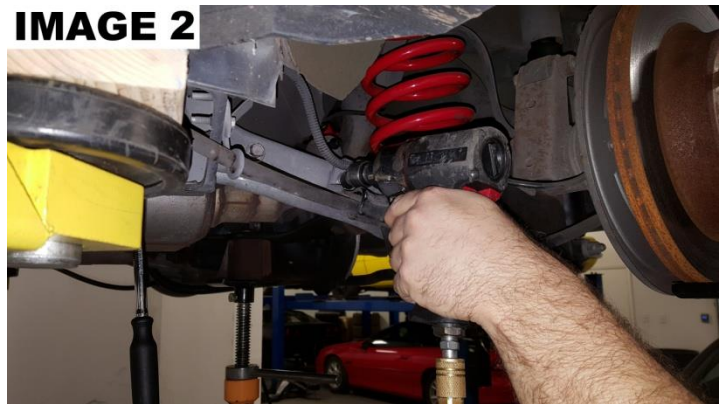
- Hydraulic jack and jack stands
- Pry-bar
- Sockets and wrenches – 13mm, 18mm, 1-1/8”

INSTALLATION:

1. Lift vehicle and support with jack stands under the frame rails.
2. For ease of access, remove both rear wheels/tires.
3. As shown in **IMAGE 1**, some exhausts may block accessibility to the lower control arm bolts in the frame rail. If this is the case, remove the exhaust before proceeding.



4. Using a 13mm wrench or socket, remove the 4 bolts on the sway bar. Remove the sway bar and set it aside. (**IMAGE 2 and 3**)
5. Support the rear end with the jack, then remove the lower shock bolts using a 19mm or 21mm wrench (most were 21mm but it has been reported that some years used 19mm nuts).



TCA049 INSTALLATION INSTRUCTIONS (CONTINUED)

6. Once the shocks are disconnected, carefully lower the rear end until the springs can be removed. (**IMAGE 4**)
7. With the springs and sway bar removed, un-bolt the lower control arms one side at a time using an 18mm wrench and socket.
8. Using the stock control arm as a guide, adjust the BMR control arms to the stock length as shown in **IMAGE 5** below.
9. Install the control arms using the factory hardware. Tighten the mounting bolts to 83 ft/lbs.
10. Tighten the jam nuts on the BMR control arms using a 1-1/8" wrench
11. Re-install exhaust, if necessary.
12. Re-install wheels/tires then lower vehicle.

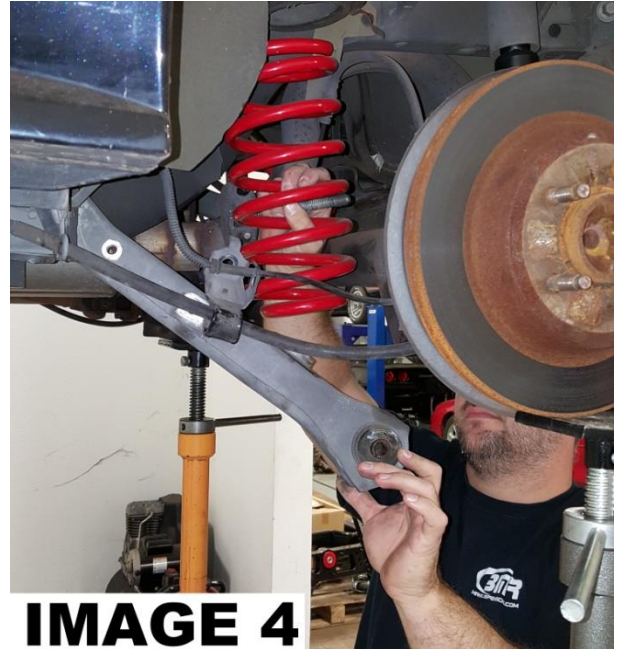


IMAGE 4



IMAGE 5

WWW.BMRSUSPENSION.COM

This product is an aftermarket accessory and not designed by the vehicles manufacturer for use on this vehicle. As such, Buyer assumes all risk of any damage caused to the vehicle/person during installation or use of this product.