



Bolt On Subframe Connector Installation Instructions

Tools Required:

- Pry-bar
- Jack and Jackstands or Lift if available
- Rubber mallet
- Standard Socket Set and Ratchet
- Drill with ½" bit

NOTE: Depending on the condition of your vehicle, it is recommended to replace the six (6) factory 'J' Nut Clips that retain the leaf spring brackets. These are included in the BMR Rear Lowering Leaf Spring Packages or thru companies like OER. (PART #378276)



Installation:

1. Raise the rear of the car with a jack or lift and be sure it is safely supported
2. Support the differential housing with a jack so the front leaf spring mounts can be removed.
3. Unbolt the leaf spring mounts from the car and droop the front of the leaf springs.

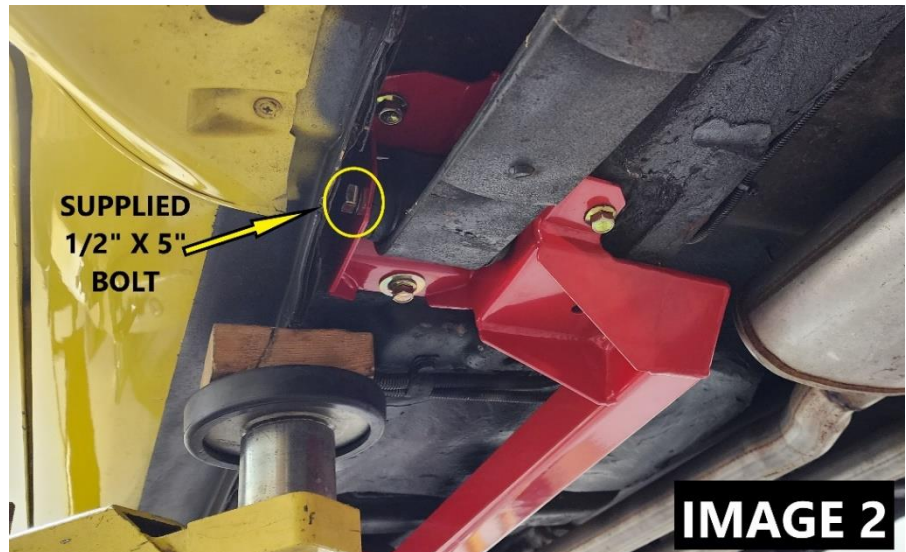
4. Unbolt the leaf spring mounts from the springs and discard.

5. Slide the subframe connectors into position on top of the front subframe. **IMAGE 1**



NOTE: The front subframe may be loosened and drooped to gain more access.

6. Bolt the front of the leaf spring to the subframe connector using the supplied ½" x 5" bolt. This bolt needs to be pointing inward from the outside of the vehicle to properly clear the pinch weld. Install hand tight until the subframe connector is fully bolted to the vehicle. **IMAGE 2**



WWW.BMRSUSPENSION.COM

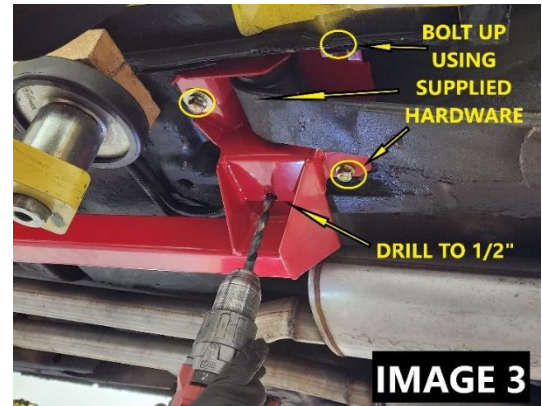
This product is an aftermarket accessory and not designed by the vehicles manufacturer for use on this vehicle. As such, Buyer assumes all risk of any damage caused to the vehicle or person during installation or use of this product.

Bolt On Subframe Connector Installation Instructions

7. Raise the rear of the subframe connector up and bolt it to the vehicle using the stock leaf spring mounting bracket mounting holes with the supplied hardware.

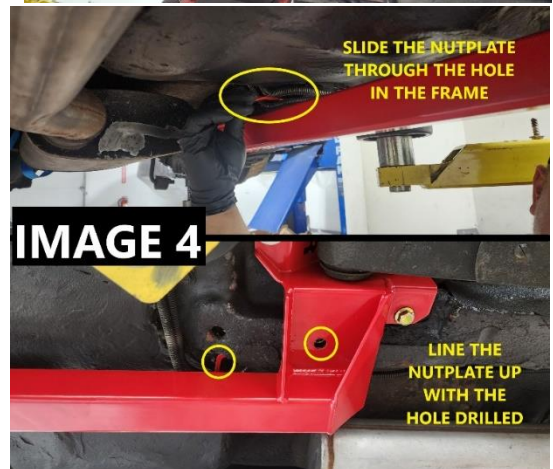
IMAGE 3

8. Using the holes in the subframe connectors as a guide, use a $\frac{1}{2}$ " bit to drill out the remaining hole in the subframe connector through the frame.



9. Insert the provided nut plates into the hole in the frame rail and line it up with the hole that was drilled in the previous step.

NOTE: Brake lines, and fuel lines may need to be moved slightly to fit the nutplate through the hole. Notice the orientation of the stem coming out of the nutplate



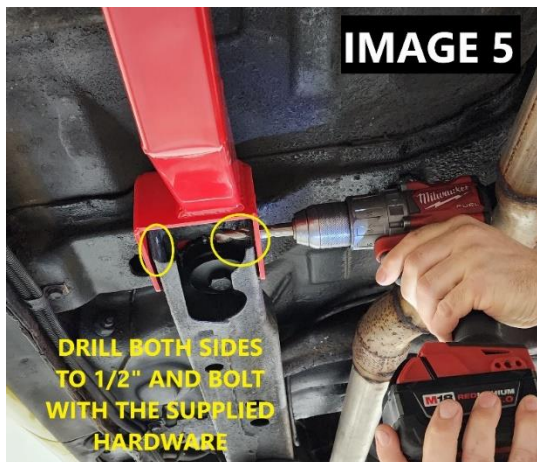
10. The front subframe will need to be drilled using the holes in the subframe connector as guides.

11. Use the supplied $\frac{1}{2}$ " hardware to bolt each side of the front subframe to the BMR subframe connector.

12. Repeat on the other side and torque each of the $\frac{3}{8}$ " fasteners in the spring bucket to 35 ft lbs and the $\frac{1}{2}$ " fasteners to 80 ft lbs

NOTE: The leaf spring bolt is difficult to access. Using thin wrenches, tighten to 80 ft lbs

13. The vehicle can now be lowered back down onto its wheels.



WWW.BMRSUSPENSION.COM

This product is an aftermarket accessory and not designed by the vehicles manufacturer for use on this vehicle. As such, Buyer assumes all risk of any damage caused to the vehicle or person during installation or use of this product.