

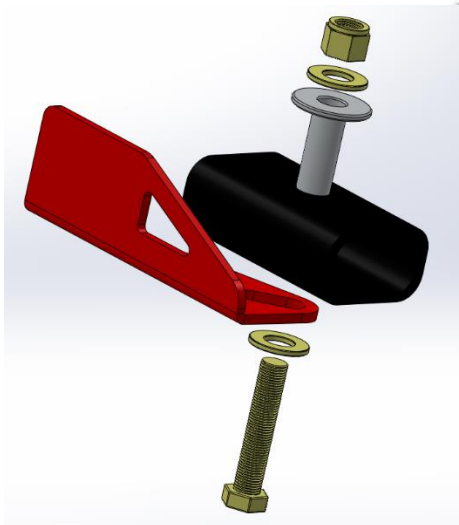
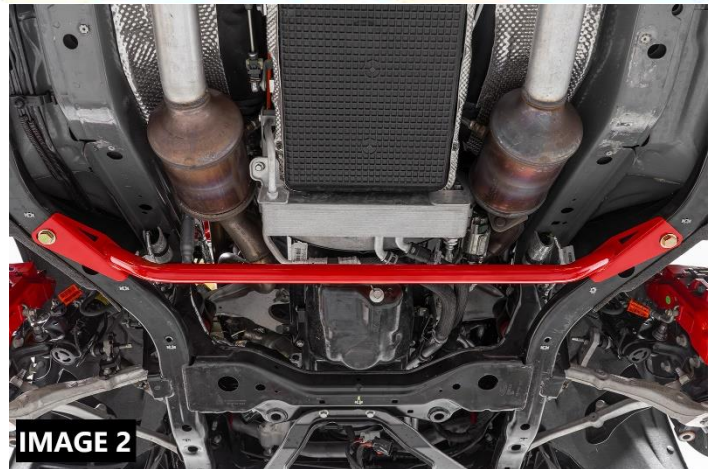
Front Chassis Brace Installation Instructions

Required Tools:

- Ratchet and Sockets – 3/4"
- Wrenches – 3/4"
- Jack and jack stands

Installation:

1. Lift vehicle and support using jack stands under the frame rails.
2. Drop the supplied spacers through the top of the subframe as shown in **IMAGE 1**.
3. Position the brace into place as shown in **IMAGE 2**
4. Place one of the provided 1/2" washers over the 1/2" x 2.5" bolts. Insert the 1/2" bolts (from the bottom) into the rear mounting holes. Thread a lock nut onto the bolt. Duplicate for the other side.
5. Tighten bolts to **90 ft lbs** using a 3/4" wrench and socket. **IMAGE 3**



WWW.BMRSUSPENSION.COM

This product is an aftermarket accessory and not designed by the vehicles manufacturer for use on this vehicle. As such, buyer assumes all risk of any damage caused to vehicle/person during installation or use of this product.