



Front Chassis Brace Installation Instructions

Required Tools:

- Ratchet and Sockets – 21mm, $\frac{3}{4}$ "
- Wrenches – $\frac{3}{4}$ "
- Jack and jack stands

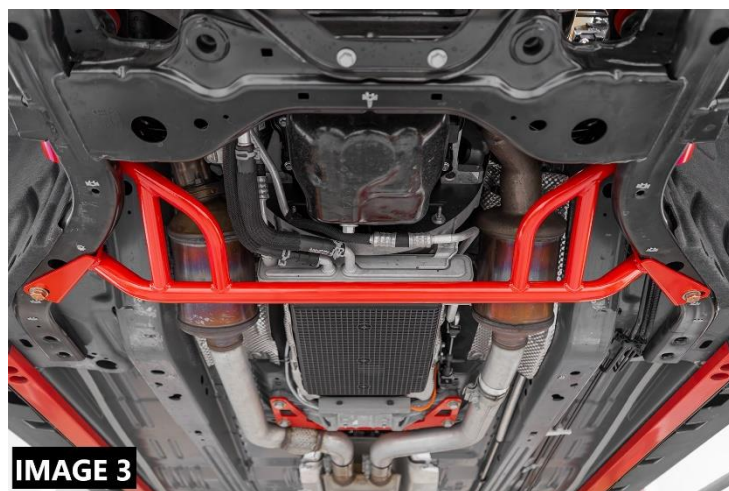
Installation:

1. Lift vehicle and support using jack stands under the frame rails
2. Remove both front wheels and tires.
3. Using a **21mm** socket, remove both lower control arm bolts as shown in **IMAGE 1**.
4. Drop the supplied spacers through the top of the subframe as shown in **IMAGE 2**.



5. Position the brace up into place and re-insert the lower control arm bolts as shown in **IMAGE 3**. Do not tighten yet.

NOTE: Aligning these bolt holes may require help from a second person to pull out on the hub/rotor assembly while inserting the bolt.



WWW.BMRSUSPENSION.COM

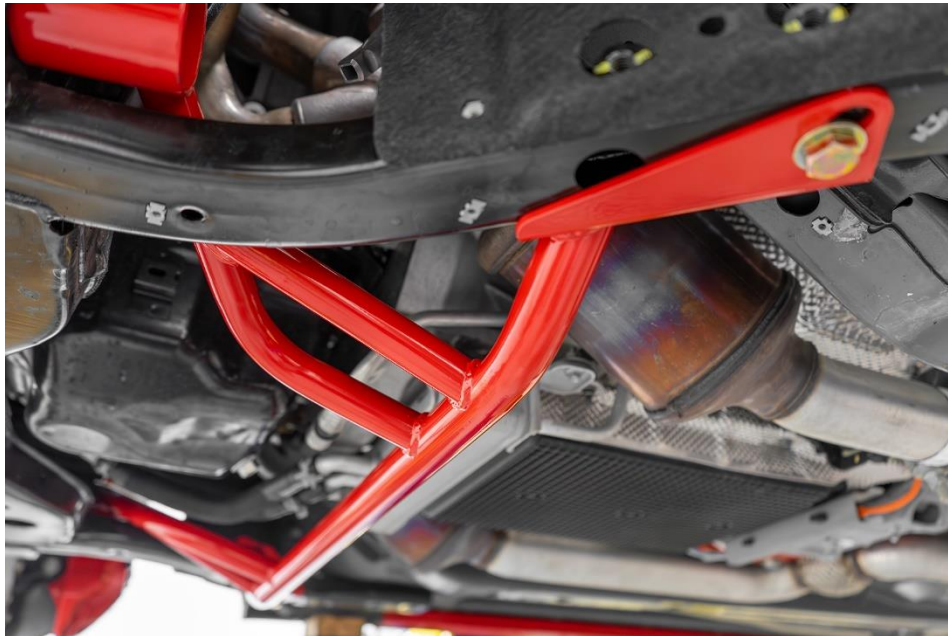
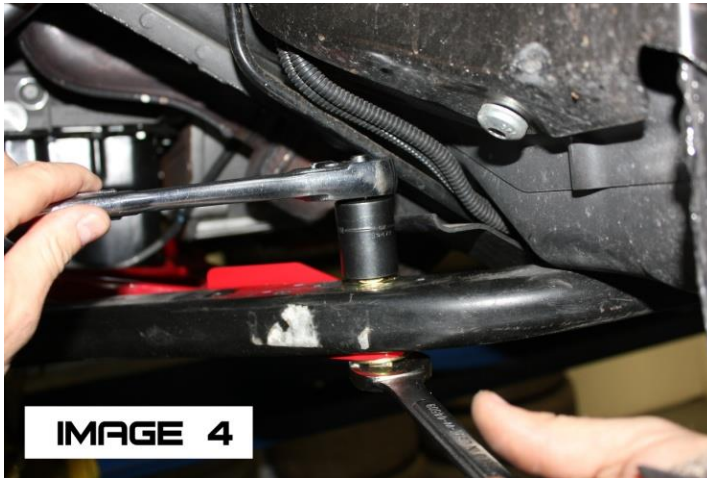
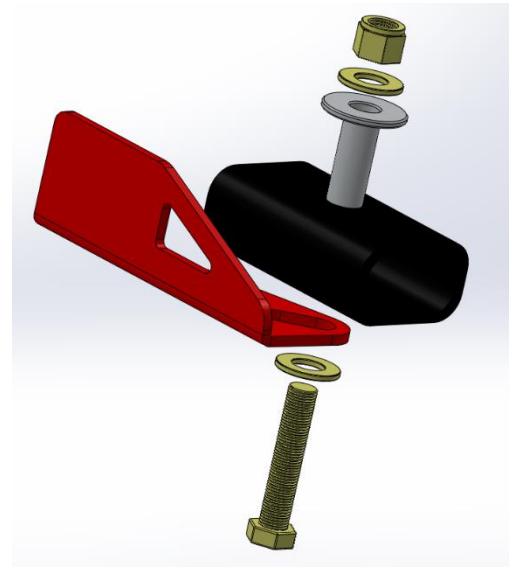
This product is an aftermarket accessory and not designed by the vehicle's manufacturer for use on this vehicle. As such, buyer assumes all risk of any damage caused to vehicle/person during installation or use of this product.



Front Chassis Brace Installation Instructions

6. Place one of the provided $\frac{1}{2}$ " washers over the $\frac{1}{2}$ " x 2.75" bolts. Insert the $\frac{1}{2}$ " bolts (from the bottom) into the rear mounting holes. Thread a lock nut onto the bolt. Duplicate for the other side.
7. Tighten the front bolts first. Torque to **184 ft lbs**
8. Tighten rear bolts to **90 ft lbs** using a $\frac{3}{4}$ " wrench and socket.
IMAGE 4

9. Re-install wheels/tires and lower vehicle.



WWW.BMRSUSPENSION.COM

This product is an aftermarket accessory and not designed by the vehicle's manufacturer for use on this vehicle. As such, buyer assumes all risk of any damage caused to vehicle/person during installation or use of this product.