



CB008 – FRONT OF THE REAR CRADLE CHASSIS BRACES

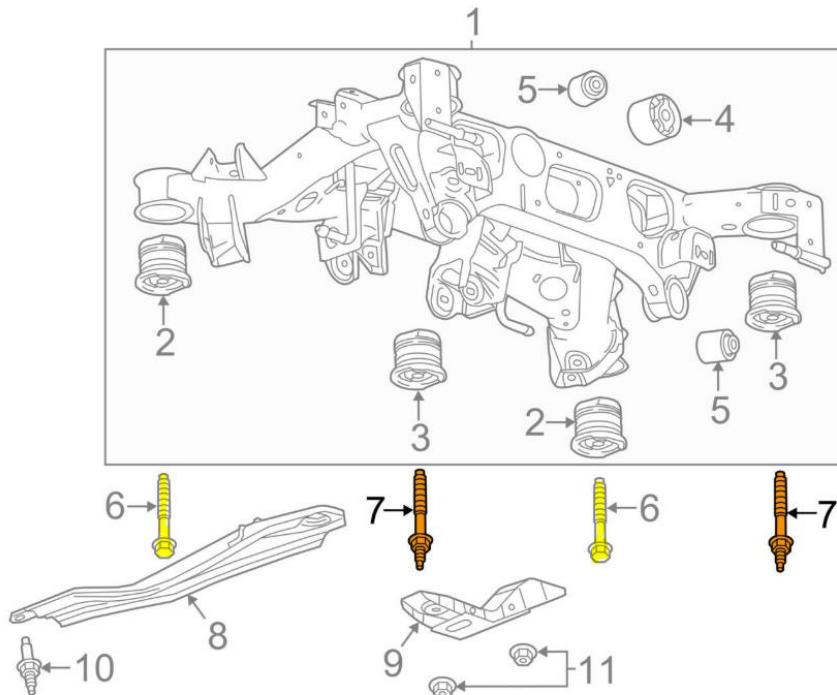
RECOMMENDED TOOLS:

- Jack and jack stands
- T15 Torx socket and ¼" drive ratchet
- 15mm and 18mm sockets, deep well



NOTE: NOTE: *General Motors* requires that you replace the front main cradle bolts as they are Torque to Yield bolts also known as *T.A.Y.* fasteners (Torque Angle Yield) or single use fasteners. During development and testing we have not replaced any of these bolts, your mileage may vary.

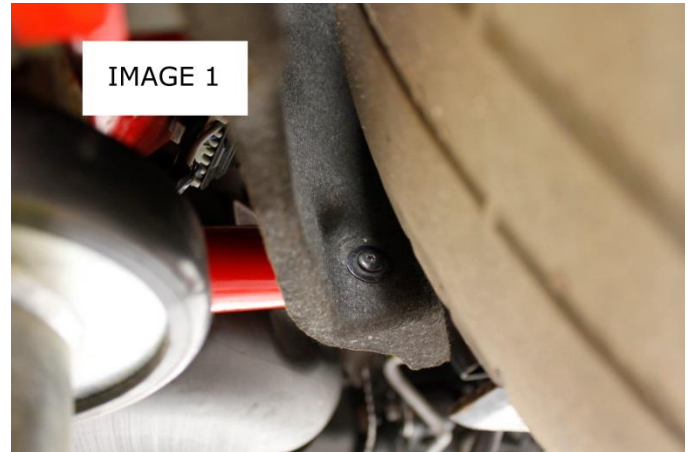
- Forward, Rear Cradle Bolts: Part # 11547921 (74ftlbs + 90-105 degrees) Shown as #6



CB008 – FRONT OF THE REAR CRADLE CHASSIS BRACES

INSTALLATION:

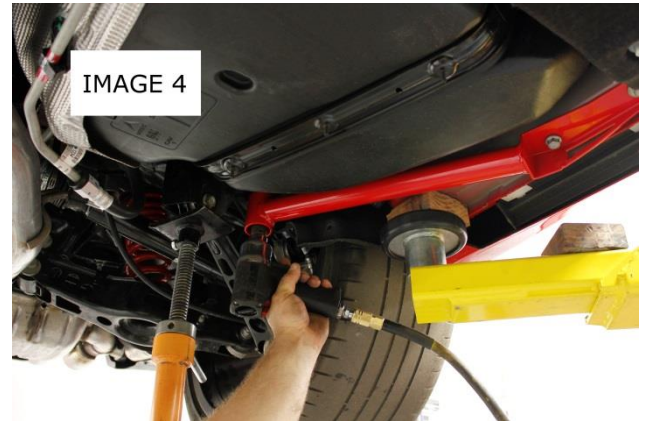
1. Lift the rear of the vehicle and support with jack stands under the frame rails. Ensure your jack and jack stand placement doesn't interfere with the removal of the original chassis brace.
2. Using a T15 Torx socket, remove the small screw at the bottom of the rear splash shield, as seen in **IMAGE 1**.
3. Using a 15mm deep well socket, remove the front two bolts from the stock chassis brace, as seen in **IMAGE 2**.
4. Using an 18mm socket, remove the rear cradle bolt, found at the rear of the stock chassis brace. Seen in **IMAGE 3**.
5. Remove the stock chassis brace.
6. Using the 18mm socket, first thread by hand the large rear bolt, leave loose once threaded.
7. Using the 15mm socket, line up and thread in the two front bolts, do not tighten.





CB008 – FRONT OF THE REAR CRADLE CHASSIS BRACES

8. Torque the main cradle bolts to 74ftlbs on the first pass and then an additional 90-15 degrees, as seen in **IMAGE 4**.
9. Then torque the cradle brace to chassis bolts to 43 ftlbs as in **IMAGE 5**.
10. Follow same instructions to install the opposite side, then lower the vehicle.



WWW.BMRSUSPENSION.COM

This product is an aftermarket accessory and not designed by the vehicle's manufacturer for use on this vehicle. As such, buyer assumes all risk of any damage caused to vehicle/person during installation or use of this product