



## CAB400 INSTALLATION INSTRUCTIONS

### RECOMMENDED TOOLS:

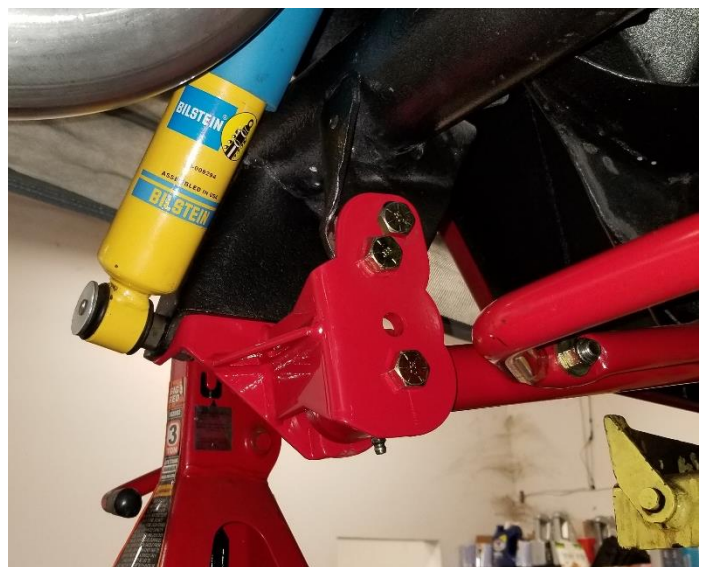
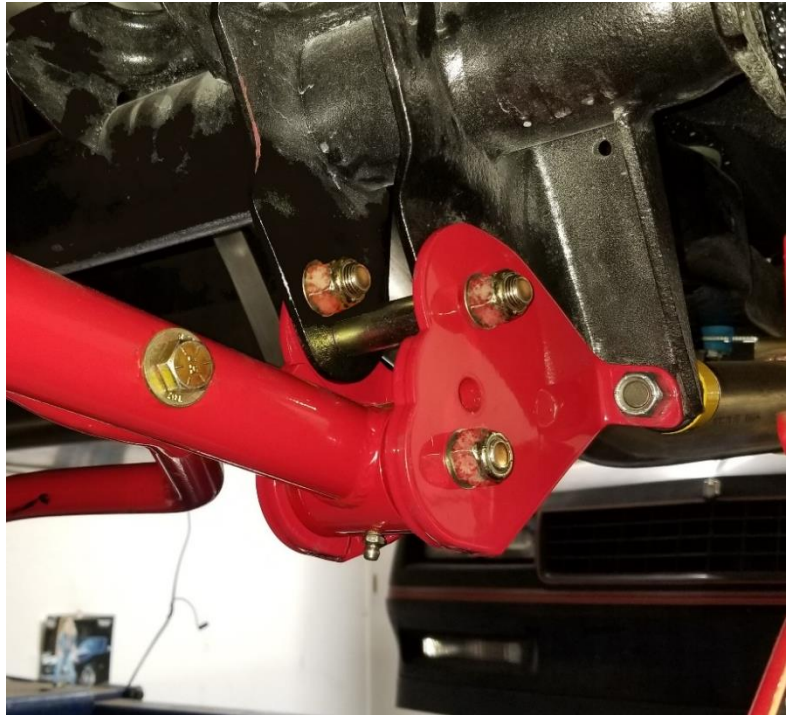
- Wrenches and sockets set
- Hydraulic jack and jack stands
- Drill with 1/2" drill bit

### INSTALLATION:

1. Lift rear of vehicle and support with stands under the frame allowing the **rear end to hang**.
2. **Remove the rear sway bar** to allow better access to the work area.
3. Place a hydraulic jack under the rear end and lift just enough to take the **tension off the shocks**.
4. **Loosen the lower shock bolts**.
5. **Loosen the upper shock bolts**.
6. **Lower the rear end**, remove the shock and pull the springs out.
7. Support rear end with jack stands.
8. **Unbolt the lower control arms** from the rear end.
9. Place the **control arm bracket** over the control arm ear as shown.
10. Use the **lower shock stud** to **align the bracket** to the proper position. Loosely threading on the nut.

*(Note: Due to production variations throughout the production of this platform, minor grinding to the shock stud hole on the bracket may be required for proper fitment)*

11. Install the **bolt** going through the **factory control arm hole** using the included **sleeves** as shown.
12. **Torque the shock stud** to its manufactures spec.
13. **Torque the bolt** in the **factory control arm hole** to **85ftlbs**.
14. Using the top bolt hole as a guide and **drill a 1/2" hole** through the **control arm ear**.
15. **Install the supplied bolt, washer and nut, torque to 85ftlbs**.
16. **Re-install the lower control arm** in the preferred hole and **torque bolt to 85ftlbs**.
17. **Reinstall springs and sway bar**.



[WWW.BMRSUSPENSION.COM](http://WWW.BMRSUSPENSION.COM)

*This product is an aftermarket accessory and not designed by the vehicles manufacturer for use on this vehicle. As such, buyer assumes all risk of any damage caused to vehicle/person during installation or use of this product.*