

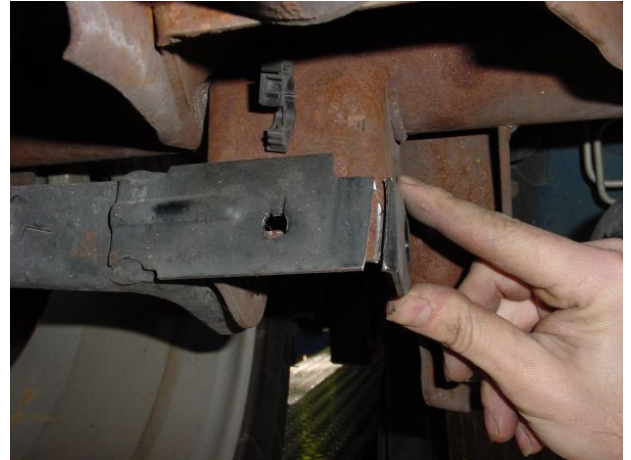


WELD-ON CONTROL ARM RELOCATION BRACKETS

Part# CAB001

Installation:

1. Lift the rear of the car by its axle and support it by the frame with jack stands. Using two 18mm wrenches, remove one of the rear control arm bolts and pull the control arm down, clear of the OE axle bracket.
2. On '97 and earlier models remove the OE caliper weights using a 15mm wrench. On '98 and newer models remove the parking brake cable from the cable bracket, then cut the rear of the bracket in half to remove (See image to the right). Slide the BMR dropped bracket over the OE mount until the top hole aligns with the factory-mounting hole (This may require a pry bar to help align). Insert the supplied spacer into the original control arm mount then insert the supplied bolt and nut but do not tighten.
3. On '97 and older models, loosen the rear brake line brackets using a 10mm wrench. Wrap the rubber lines with foil and position them out of the way, clear of the weld area. With the suspension loaded, swing the control arm down to the lowest mounting hole of the relocation bracket and insert one of the new bolts through the bracket and the control arm. It is necessary to place 2 of the supplied washers on each side of the control arm. It is important that the **other** control arm is still attached in the original location before proceeding. This will insure that the wheel remains centered in the wheel well and that pinion angle remains unaffected. Weld a full bead around both sides of the bracket and along the top of the rear as well. Once the bracket is welded into place, the cross bolt and spacer may be removed.
4. Repeat the above steps for the other side.
5. On '97 and older models, use a hacksaw or grinder to remove approximately 1/4" off the side of both caliper weights to clear the new brackets, then re-install (see image below). On '98 and newer models, position the parking brake cable brackets into position and either weld them into place or drill a hole and bolt them into place (as shown below).
6. Load the suspension by supporting the car by the rear end and then tighten all bolts. **NOTE:** Bushings must be tightened when the suspension is loaded to prevent bushing preload. Tightening the bolts with the rearend hanging can result in irregular ride height and premature bushing wear.



WWW.BMRFABRICATION.COM

This product is an aftermarket accessory and not designed by the vehicles manufacturer for use on this vehicle. As such, buyer assumes all risk of any damage caused to the vehicle/person during installation or use of this product.