



## **TUBULAR A-ARM INSTALLATION INSTRUCTIONS FOR 2005- 2014 MUSTANG**

Covering part #'s AA751, AA755 and AA757

### **RECOMMENDED TOOLS:**

Jack, Jack Stands, Lug wrench

15mm wrench

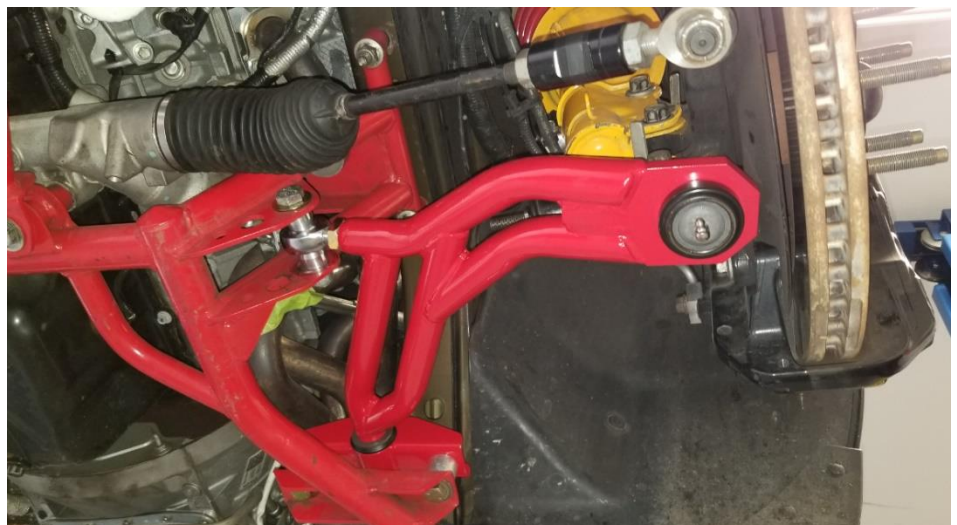
½" drive ratchet with 18mm deep socket and 21mm socket

Brass hammer

### **INSTALLATION:**

1. Lift vehicle and support with stands positioned under the frame rails. Remove both front wheels/tires.
2. This step is not necessary for installation but makes the work area more accessible. Using a 18mm deep socket, loosen both outer tie rod ends. Knock both tie rods loose from the spindles using a brass hammer.
3. Using a 15mm wrench and 18mm socket, loosen and remove the spindle bolt that clamps the ball joint to the spindle.
4. Using a 18mm socket (21mm for 2010 and newer), loosen and remove the rear A-arm bolts on the K-member.
5. Using a 18mm socket, remove the front A-arm bolt on the K-member.
6. Remove A-arm.
7. Adjust the rod-ends of the BMR A-Arms to the approximate length of the OE A-arm and then install.
8. With the A-arms installed, torque the following bolts to these specs:
  - Front A-arm bolt 95ft-lbs
  - Rear A-arm bolts 25ft-lbs
  - Tie rod stud – 55 ft-lbs.
  - Ball joint cross-bolt – 75 ft-lbs.Tighten the jam-nut on the rod end at this time.
9. Repeat steps 3-8 for the other side.
10. Re-install wheels/tires and allow the vehicles weight to rest on the suspension. The suspension is now loaded and the front bushings may be tightened to 95 FT/LBS. If not on a service lift, this step may be done on ramps or blocks.
11. Grease all bushings on the A-arms with a grease gun. For optimal wear qualities and minimal noise, a silicone, polyurethane-specific grease is recommended.

With all versions of these A-arms, a 4-wheel alignment is necessary after installation. If you are installing BMR adjustable A-arms, it is possible to narrow the track width up to 9/16" per side. Depending on vehicle ride height, doing so may require additional camber adjustment in the form of camber bolts. These are also available from BMR under part number FC001.



**WWW.BMRSUSPENSION.COM**

*This product is an aftermarket accessory and not designed by the vehicles manufacturer for use on this vehicle. As such, buyer assumes all risk of any damage caused to the vehicle/person during installation or use of this product.*