



Heavy Duty Boxed Subframe Connector Installation Instructions

Please read the following important information before proceeding with this installation.

- It is recommended to perform this installation on a 4 post service lift with the suspension loaded. Two post lifts or floor jacks cannot be used because it is necessary to separate the body from the frame during the installation.
- This installation does not account for brake and fuel lines that may need relocation due to interference. Please have all the materials necessary to perform modifications to these items before proceeding.
- While it is not necessary, to get the most out of your BMR subframe connectors it is highly recommended to install a set of BMR's Delrin Body Mount Bushings to further reduce chassis flex in the vehicle.

TOOLS REQUIRED:

- Pry-bar
- Rubber mallet
- 9/16" socket
- 15/16", 3/4" socket
- 3/4" wrench
- Drill with 1/2" bit

INSTALLATION:

1. Before raising the vehicle it is necessary to remove the lower portion of the rear seat to gain access to the floor pan area under the seat. This can be accomplished by pushing in on the front of the seat and lifting upward at the same time. There is a seat retainer on both the driver's side and the passenger side that must be unfastened to lift the seat upward. Once released, remove the seat and place aside.
2. Choose a side to begin then locate the rear-most body mount bushing on the front subframe. Using a 15/16" socket, remove this bolt. Loosen the next bolt forward also but do not remove it. The subframe should separate from the body.



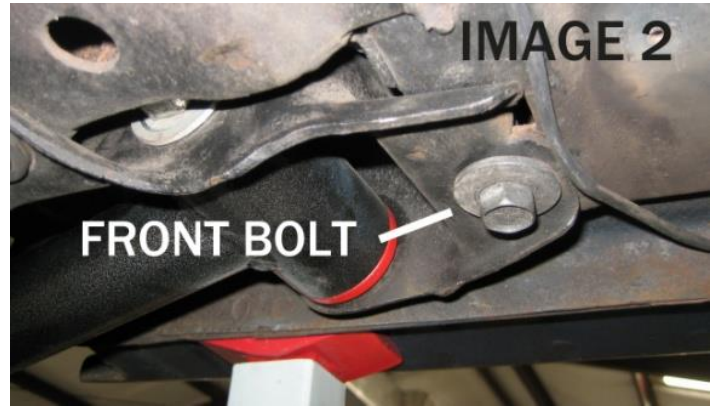
WWW.BMRSUSPENSION.COM

This product is an aftermarket accessory and not designed by the vehicles manufacturer for use on this vehicle. As such, Buyer assumes all risk of any damage caused to the vehicle or person during installation or use of this product.

Heavy Duty Boxed Subframe Connector Installation Instructions

- Using a pry-bar, pry the subframe down until the factory body mount bushing can be removed. The bushing is a two-piece design, one portion on top of the subframe and one below.

NOTE: depending on the condition of the vehicle, this area is subject to rust and scale. Before proceeding, inspect the area for damage and repair, if necessary.

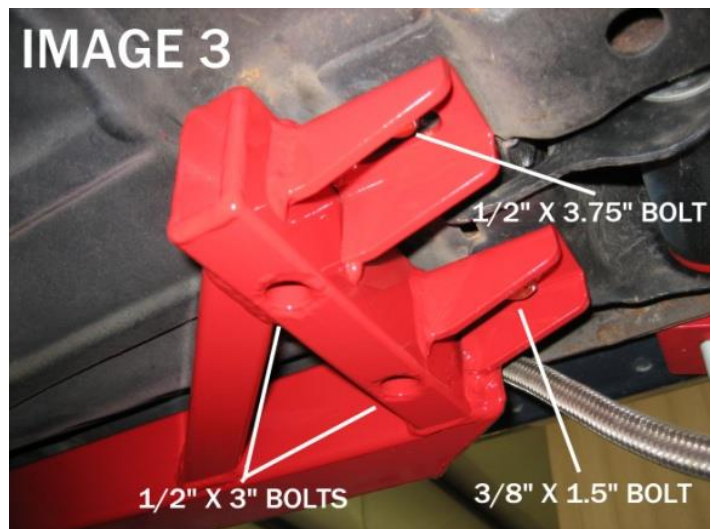


- Using a pry-bar, pry downward on the subframe connector and insert a block of wood as shown in Image 1. Lift the appropriate subframe connector into place and slide it over the rear of the subframe. Insert the mount bushing from the top.
- Remove the block of wood, allowing the subframe to return to its normal location.
- Using a 9/16" socket, remove the front bolt from the leaf spring mount. (See **IMAGE 2**)

- Lift the rear of the subframe connector up until it lines up with this bolt hole as shown in **IMAGE 3** Insert the 3/8" x 1.5" bolt, washer and lock washer into the hole and loosely tighten.

- Insert the lower portion of the body mount bushing on the front and insert the supplied new bolt and washer. Loosely tighten until the subframe is drawn back up against the floor pan.

NOTE: If possible, use a jack to raise the subframe. This will prevent excess stress on the threads of the body mount bolt and nut.



Heavy Duty Boxed Subframe Connector Installation Instructions

9. Using the holes in the front subframe connector box as a drill guide, drill through the factory subframe with a $\frac{1}{2}$ " drill bit. See **IMAGE 4** It may be necessary to remove the exhaust or use a 90 degree drill to gain access to the inside drill area.



10. Insert the $\frac{1}{2}$ " x 1" bolts, washers and nuts into the holes and tighten to 110 ft/lbs.

11. Using the remaining rear holes in the back of the subframe connector as drill guides, drill up through the floor pan using the $\frac{1}{2}$ " drill bit. See Image 5.

12. Inspect the area around this mounting location for gaps between the subframe connector and floor pan. Due to production variance, age, vehicle damage, etc., it may be necessary to insert a shim washer into these areas before installing the mounting bolts. BMR supplies 8 shim washers for use in these locations.

13. Insert the bolts from the top using the appropriate sizes illustrated in **IMAGE 3**

NOTE: *it may be necessary to pull the carpet back to gain access to these holes.*

14. Once the bolts are inserted, install a washer and nut on each bolt then tighten to 110 ft/lbs.

15. Tighten the $\frac{3}{8}$ " bolt to 25 ft/lbs.

16. Tighten both front body mount bolts to 180 ft/lbs.

17. Repeat steps 2-16 for the other side.

18. Re-install the rear seat.

19. Lower vehicle.



WWW.BMRSUSPENSION.COM

This product is an aftermarket accessory and not designed by the vehicles manufacturer for use on this vehicle. As such, Buyer assumes all risk of any damage caused to the vehicle or person during installation or use of this product.